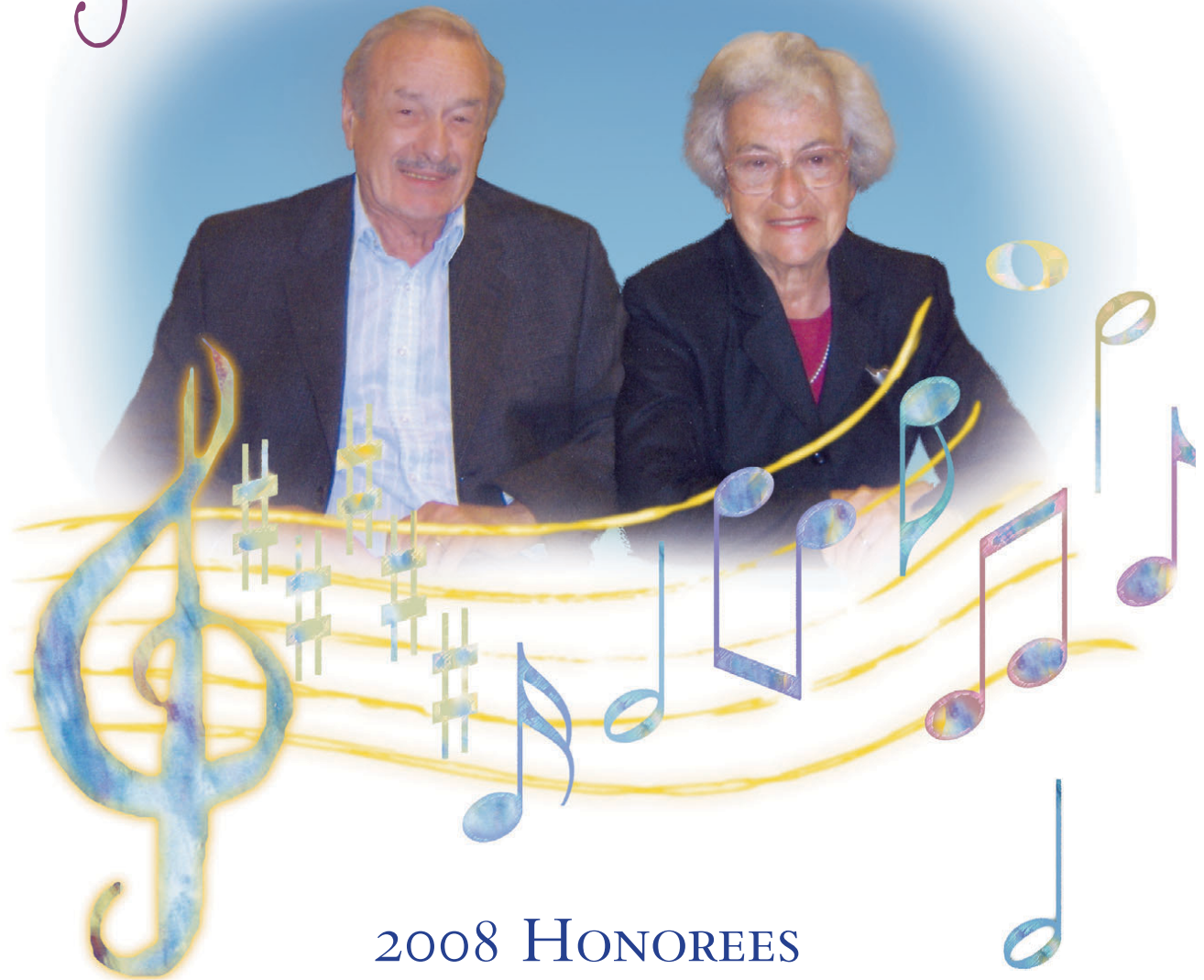


*A Musical Tribute to
Susanne and Alfred Batzdorff*



2008 HONOREES

THE 4TH BENNY FRIEDMAN
COMMUNITY RECOGNITION AWARD DINNER



Synagogues, especially in the diaspora, are the institutions vital for Judaism's future. There is not a single word or two that adequately describes what synagogues represent. Synagogues are buildings, they offer religious services, they provide Jewish education, and are social centers for their members. Most importantly, though, a synagogue is a living and breathing soul that is an expression of its membership, its rabbi and other professional staff. A synagogue's character is built, over time, by its members with their passion and commitment to Judaism.

Beth Ami has and continues to be part of the Sonoma County Jewish community landscape. Susanne and Al Batzdorff have nourished this Jewish oasis and helped make it flourish with their tireless efforts on our synagogue's behalf. They are totally devoted to Judaism in every aspect of their lives. Their love for Judaism and for the Jewish community is evident to all of us who have had the honor and pleasure of working - and playing - with them during the past 25 years. They have participated in synagogue life at every conceivable level. They bring to every project wisdom, experience, humor, and incredible energy.

Al and Sue have shown total commitment to their synagogue, and to their community. They have taken responsibility for sustaining the soul of Beth Ami. The example of their lives is an inspiration to those of us who have followed them. From all of us who have served, in any capacity, as volunteers for Beth Ami, we offer our thanks to Al and Sue. By your example and by your knowledge, you have shown us the model for preserving and nourishing all that is most valuable to us at Beth Ami.

Congregation Beth Ami Board of Directors, 2007-2008

George Schlesinger, Rabbi
Melissa Bloom, Executive Director

Andy Fleming, President
David Ballo, Vice President
Al Batzdorff, Vice President
Henry Cohn, Treasurer
Robin Winning, Secretary
Susanne Batzdorff
Patty Bernstein
Bonnie Boren

Nicole Burke, ex officio
Marcia Gladstone, ex officio
Richard Kahn
Richard Lazovick
Martha Mazur-Lane
Susan L. Miller
Mark Rosen
Birgit Sacher



Order of Evening

Wine and hors d'oeuvres reception
Music by Zim Zum

Havdalah and Hamotzi

Rabbi George Schlesinger
Congregation Beth Ami

Welcome

Master of Ceremony
David Ballo
Past President, Congregation Beth Ami

Reflections

Dr. Ernst Ludwig Biberstein
Brother, Susanne Batzdorff

Salad of Local Greens

"They Were You" from the *Fantasticks*
by Tom Jones and Harvey Schmidt
"Carried Away" from *On the Town*
by Leonard Bernstein

Leira V. Satlof and Carl McGahan
Liturgical Soloists
Accompanied by Tony D'Anna

Classical Musical Composition

Thalia Moore and Anthony Martin
of String Circle with Katherine Kyme

Sea Bass with a Citrus & Tomato Reduction
Whipped Sweet Potatoes
Green & Yellow Beans
Vegetarian Entree: Vegetable Strudel

Video and Slide Presentation

Rick Krigstein, Videographer

Reflections

Dr. Ulrich Batzdorf
Brother, Alfred Batzdorff

Balladeer Extraordinaire

Jon Batzdorff, Son

Gift Presentation

Carolyn Metz
Former Regional Director,
Jewish Community Federation.
Former Executive Director,
Jewish Community Agency of Sonoma County.

Personal Reflections

Susanne and Alfred Batzdorff

Apple Galette with Cinnamon Ice Cream and Caramel Shards

Birkat Hamazon

Rabbi George Schlesinger

Reflections

Rabbi George Schlesinger

Closing Ceremony

An original arrangement by Paula Schlesinger



Committed to Community

Susan Milstein



TWENTY FIVE YEARS AGO, ALFRED AND SUSANNE BATZDORFF sold their home in Langhorne, Pennsylvania, took early retirement at age 60 from their jobs, said goodbye to longtime friends, colleagues and neighbors, and moved to Santa

Rosa. Family was the draw: their son and daughter-in-law, Jon and Rose, already were living here, and it was just up the coast—rather than across the continent—from Los Angeles, where Al and Susanne's two other sons, Ronald and Benjamin, were living. They also each had a brother living in Los Angeles. But Al and Susanne knew that their lives couldn't revolve around their children. They needed to make their own connections in their new hometown, and the synagogue was the place to which they naturally first turned. "You move to a new community and you look for family," Al explains. "To us, the synagogue feels like family."

Joining Congregation Beth Ami was the first step in what has been Al and Susanne's total immersion into the life of Sonoma County's Jewish community. Since arriving in town, they have poured their energies and talents into a myriad of projects and efforts all aimed at one overarching goal: to enhance the opportunities for all of us to lead more robust Jewish lives. "Everything they've been working on since they got here is aimed at trying to create a more vibrant Jewish community in Sonoma County," says Carolyn Metz, a Beth Ami member and former executive director of the Jewish Community Agency of Sonoma County. "Whether it's through music or books or film, they are always looking for ways to draw people to the Jewish community and to enrich the lives of those of us already in the community."

Al and Susanne say they were inspired to get so deeply involved in the synagogue and in the larger Jewish community partly by a need to build a social life for themselves but also by a long-held desire to

help compensate for the destruction they personally witnessed as teenagers in Nazi Germany. "Our synagogue in our hometown in Germany was burned to the ground. Dynamited," recalls Susanne. "The synagogue had symbolized the center of our Jewish life and it was gone. Ever since then, we've been determined to see that Jewish life and Jewish communities are vibrant and strong. We've tried to contribute to that in every place we've lived."

In Sonoma County, Al and Susanne have contributed in so many varied ways that is difficult to imagine how different Jewish life here would be had they not relocated to Santa Rosa. "You look around anywhere you go in the Jewish community and the Batzdorffs are always there," says Beth Ami treasurer Henry Cohn. "They are involved in everything."

The Batzdorffs are familiar to just about everyone who has ever attended Beth Ami on Shabbat morning. For years we've seen them walking to shul—on time, in fact, and often with the Rabbi. In the sanctuary, they always greet us with their distinctive, almost formal slight nod of the head and a quick smile. They sit close to the front, and at those moments in the service when the congregation stands up, Al and Susanne usually are the first on their feet. They blend their voices into the stream of communal prayer, and they often pitch in to lead services.

Everyone also knows Susanne as Beth Ami's longtime librarian, the force behind the award-winning Celia Gurevitch Jewish Library. And people recognize Al as the perennial member of Beth Ami's board of directors and as a past president of the congregation as well as of the Jewish Community Agency.

But much of what Al and Susanne contribute goes on behind the scenes, quietly and without fanfare. They visit people in the hospital. They bring food to the homes of people recuperating from illness. They take into their home people who have been ill and don't have anyone to care for them. They help make minyan for people sitting shiva. They graciously welcome visitors to their home with bountiful spreads of food on holidays and special occasions. And they invite not just their friends, but people who seem to need a place to go.

They travel all over the area to speak to adolescents and teenagers about the Holocaust, and help plan and run the community's annual Yom Hashoah commemoration for those remembering relatives killed by the Nazis.

"When I think of the Batzdorffs, the word that comes to my mind is devotion," says longtime friend and fellow library volunteer Sylvia Sucher. "Devotion

to the Jewish community, yes, but also devotion to each other, and to everyone they know and everything they do."

In their work in the community, the Batzdorffs are unusual in that they have focused on everything from the "big picture" issues, such as how the various synagogues can work together cooperatively, to the most minute details of synagogue life, such Torah coverings and the Torah curtain in the sanctuary. They are known for their strongly held positions and for doggedly advocating for what they believe is right. Yet no detail is too small to be undeserving of their interest and attention. They are visionaries, but they are also worker bees. "The Batzdorffs are so effective in getting things done in part because they understand how organizations and communities work," says Beth Ami president Andy Fleming. "Plus they are willing to do the hard work that is required to bring results."

When you are as strong-minded as Al and Susanne are and as active in the community as they have been, not every matter is going to be resolved the way you would prefer. Al and Susanne acknowledge that not everything has gone the way they would have liked over the past 25 years. Susanne, in particular, wishes the community was more supportive of the library she created. And yet, despite their disappointments, they've never quit. "They never walk away, even when they don't get what they want or when things don't go their way," says Rabbi George Schlesinger. "They argue for their position, but if the vote is against them, they seem never to take it personally. They never storm out of the room saying, 'I'm not coming back.' They stay and plug away at the next issue."

Through it all, Al and Susanne have managed to retain a great sense of humor. "Even when you disagree with them, even when you are in conflict with them," says Andy Fleming, "you can still joke with them."

A Small, Intimate Congregation

As Al tells it, it didn't take a membership committee to persuade Susanne and him to join Congregation Beth Ami. They had belonged to a Conservative synagogue in Pennsylvania, and even before moving to Santa Rosa, they had attended Shabbat morning services while in town visiting their children. At Beth Ami, they found a small group of worshippers, some of whom were pitching in to lead services while awaiting the arrival of the young rabbi named Jonathan Slater whom they had just hired.

"It was a much smaller congregation than the one we belonged to in Pennsylvania, but it also was a much more intimate group," Al recalls. "Maury Brenner was leading services. Ellen Brosbe was nursing her baby. We met Evelyn and Leo Gurevitch and the Wexlers." Susanne recalls, "People reached out to us. They were very welcoming."

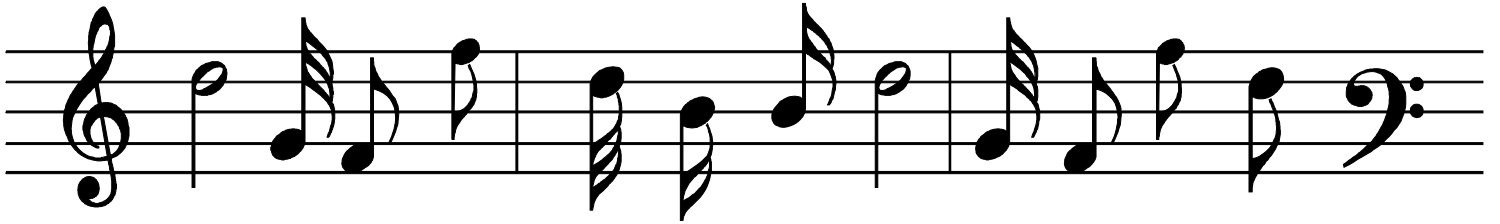
In Pennsylvania, Al and Susanne had attended services regularly, but their fulltime jobs and family responsibilities didn't allow them much extra time to devote to the congregation. That changed when they moved to Santa Rosa. The Batzdorffs had barely unpacked their boxes after arriving in August of 1982 when they began joining synagogue committees and initiating projects. "They became very involved in the congregation right from the start," recalls former Beth Ami president Cynthia Wexler. "They brought new ideas, and they were willing to take on responsibilities and step forward to do the work."

In the early years after arriving in town, Al was still working as a consultant in his field of mechanical engineering. Susanne, who had had a long career as a librarian with the Philadelphia Free Library, had turned down an offer to work as a roving librarian for the Sonoma County Library to devote time to writing her autobiography. Yet they managed to make time to volunteer at the synagogue.

"I remember them as a high-powered couple," recalls fellow congregant Marg Ballo. "They didn't fit my image of older people. They were still vigorous, and they had time and energy to devote to the congregation. They became the moving force behind a lot of what went on at the synagogue."

Not only did Al and Susanne immediately establish themselves as regular attendees of the Shabbat morning service, but they also became actively involved in the Religious Practices Committee and the Adult Education Committee, both of which Al later chaired. And Al, with his engineering background, early on joined the Building Committee, which at the time was overseeing the construction of the classroom wing. Throughout the ensuing years, they've kept up their involvement in those committees while constantly taking on new endeavors.

continued on page 8



To Susanne and Al:

*No congregation
has ever been
so fortunate
as we,
Congregation
Beth Ami,
to have such
incredibly talented
capable and dedicated
as thee.*

*Love, Carol and Mark
and everyone!*



Creating the Celia Gurevitch Library

Al and Susanne weren't in town long before word got out that Susanne was a professional librarian. At the time, Beth Ami had a bunch of Judaic books but no library and no librarian—yet.

One day during that first year, someone—no one can remember who—led Susanne into a classroom, pointed to a out-of-reach shelf stacked haphazardly with donated books, and asked her if she would be willing to take a stab at organizing the congregation's hodgepodge collection. Susanne recalls her ambivalence: on the one hand, she believes to this day that it's wrong for a professional librarian to work as a volunteer librarian. On the other hand, how could she resist such a tempting challenge and opportunity? "I looked at those books—there were about 800 of them at the time—and I thought, 'This is a very small little Jewish library, and I could make it into something more significant if I got the means to do so,'" she says.

By the summer of 1983, Susanne and another newcomer, Sylvia Sucher, were hard at work creating what we all know today as the Celia Gurevitch Jewish Library. "I was so glad she knew what she was doing," Sylvia recalls. "Of course, Susanne wasn't going to be satisfied with a thrown-together library."

In her determined way, Susanne appealed to the synagogue's board of directors for a designated room to house the growing collection. "They acted like it was the most outrageous thing they'd ever heard of," she recalls. But Susanne was persuasive: The library was built, and Susanne's and Sylvia's enthusiasm attracted other volunteers. "There was a lot of positive energy. That summer we got the collection catalogued and ready for the shelves. We moved into the new room and made it attractive," Susanne says. "I was having a lot of fun. I felt I was doing something that might not have gotten done if I hadn't been willing to take it on. It was good for my ego and good for the community at the same time."

One thing led to the next. Susanne and Sylvia, along with other library volunteers, started a Beth Ami book discussion group that 25 years later continues to meet monthly with some of the original members still attending.

Up until she retired as librarian last year, Susanne put about 20 hours of volunteer work a week into the library. She did this while also writing articles and books, in particular several about her aunt, Edith Stein, a Carmelite nun who was killed in Auschwitz in 1942 and canonized in 1988.

Largely as a result of her efforts, the library has received several national awards. But much to

Susanne's dismay, it is still housed in the same room, which Susanne is quick to point out was just supposed to be temporary quarters. She doesn't hide her deep disappointment,



and yet, upon reflection, she says creating the library was "a positive accomplishment." She says she enjoyed helping children from the Nursery School and the Religious School discover Jewish literature, and directing engaged couples to books about Jewish weddings and expectant couples to books of Jewish baby names. She says the library was a resource for people of all faiths wanting to learn about the Holocaust as well as for those looking for Jewish recipes or just a good novel.

"We made it possible for a lot of people to have access to a really good Judaic book collection and for lots of children to grow up knowing what Jewish books are," she says. "I don't feel it was a waste for me to have worked on it. I feel good about what I accomplished."

Conservative Judaism in Action

Both Al and Susanne have had a hand in shaping religious services at Beth Ami since their arrival in town. In the early years, through the Religious Practices committee, the Batzdorffs and other congregants grappled along with Rabbi Slater over the details of how Conservative Judaism was to be practiced at Beth Ami under the new rabbi's leadership. The committee's discussions focused mainly on matters such as appropriate standards of dress and behavior in the synagogue, the role of non-Jews in services and the rules regarding music on Shabbat and holidays. Later, the committee tackled the thorny issue of videotaping services. "The Batzdorffs brought to our discussions a sensibility of decorum and of the proper way things should be done at a Conservative synagogue," recalls Rabbi Slater. "They challenged everybody to think about who we are, what we wanted to do and how we were going to do it."

Rabbi Slater recalls that Al and Susanne had “strong opinions about the way services should run and the way people should behave at services.” He appreciated that they brought those concerns to the committee rather than “fomenting things in the back room.” He said Al and Susanne “promoted their ideas with great energy, but once a decision was made, even if it didn’t go their way, they found a way to live with it. They never left. No matter what.”

While they were engaging in intellectual and theological discussions, Al and Susanne also were working on more concrete projects. They started producing Beth Ami’s Yizkor book for the High Holy Days, which brought funds into the synagogue coffer and gave congregants a way to publicly memorialize their loved ones. Typically, they introduced the idea – which they brought with them from their Pennsylvania synagogue – and did all the work themselves to make it happen. They participated in replacing the old Torah mantles and reading table cover, with Al helping to design patterns for the new covers and Susanne joining a group that embroidered artwork on them.

Rabbi Slater recalls that it was Al and Susanne who would take it upon themselves to change the Torah mantles and table coverings to the High Holiday décor every year while he was leading congregants in Selichot services. “They were always there, quietly doing the work that had to get done,” Rabbi Slater recalls. And when Sukkot rolled around and it was time to put up the synagogue’s sukkah, Al was – and is still – always involved in the process. In fact, for years the synagogue used a sukkah that Al designed.

The Batzdorffs also are founding members of Sonoma County’s Chevra Kadisha, a group that sees that deceased members of the community are prepared for burial according to Jewish law. To this day, Susanne still helps out with the tahara, the ritual cleansing of the body, for women. And after the tahara is completed, Al routinely takes the first shift sitting with the body. “They’ve never missed a call to help except when they’ve been out of town,” says Patty Bernstein, another Chevra Kadisha participant who also is Beth Ami’s current Religious Practices committee chair. “They are quite dedicated.”

When Rabbi Slater left Santa Rosa in 2001 and Rabbi George Schlesinger took over, Al took it upon himself to revive the then-defunct Religious Practices committee to help Rabbi Schlesinger acclimate to the congregation. “Right from the very beginning,” Rabbi Schlesinger recalls, “Al saw it as his responsibility to

reconstitute the Religious Practices committee, to take charge of it as chairperson, and to use the committee as a vehicle to integrate me into the community religiously. The committee meetings gave congregants a way to give me guidance and gave me a way to guide the congregation. Al saw this as his task.”

Al stepped down as chair of the committee a couple of years ago but he and Susanne continue to serve as active members of the committee. Rabbi Schlesinger says the Batzdorffs are always looking for new ways to observe Jewish law themselves and to encourage observance in the congregation. “They’ve been on a personal journey in their own lives of ever-growing observance and they are always looking for ways to bring those traditions to others,” he says.

Helping to Run the Synagogue

As Al’s professional life as a consultant wound down in the late 1980s and early 1990s, he was drawn deeper and deeper into the administration of the congregation. He joined the synagogue’s Board of Directors shortly after moving to Santa Rosa, and he later took on the roles of administrative vice president and president of the congregation. “I don’t know that I made a conscious effort to get so involved,” Al says, looking back in retrospect, “but since the synagogue always needed help and I had the time available, I was there.”

Board member and former Beth Ami president Dave Ballo says Al approached the administration of the synagogue as the methodical engineer he was trained to be. “He’s got the most analytical approach to solving problems,” Dave says. “He helped us become more organized. He’s always making elaborate spreadsheets and matrices, and he’s big on documentation.”

At two separate junctures, Al has stepped in to help manage the synagogue when the executive director position was vacant, most recently this past year when he pitched in along with Andy Fleming, board member Robin Winning and staff member Karen Gould to keep things afloat until the new executive director, Melissa Bloom, came aboard. “He knows the way the synagogue works and he knows its history so well that he’s been a real valuable resource,” says Andy.

Al has remained on the Building Committee all these years and has been involved in planning and

continued on page 13

executing the three most recent phases of renovation, culminating last summer with the reconstruction of the sanctuary and social hall. "He's been involved in every aspect of the process, from seeking pledges to working with the architects to checking on the actual construction," Andy says.

Al says his work for the synagogue gives him a sense of purpose in life. "I don't want to live just to sustain myself," he says. "We are created to make a difference, to make the world at least a little bit better. If you can contribute something, you should."

Keeping Alive the Memory of the Holocaust

As refugees from Nazi Germany, Al and Susanne have made it their job to educate people about the Holocaust. As the 50th anniversary of Kristallnacht approached in 1988, they felt that a special commemoration was needed. They wanted the commemoration to draw the attention not just of the Jewish community but of the entire Santa Rosa community to the tragic historical events that they remembered all too well. With the help of Rabbi Slater, they formed a coalition of clergy and lay members from a number of local religious communities and organized an observance for which Susanne wrote a dramatic reading. The event was held at a Lutheran church.

In later years, they became key players in the community's annual remembrance of the Holocaust through their participation in the Yom Hashoah Committee. Al went on to chair the committee at one point. It was their idea to produce a memorial booklet for the annual event in which names of Shoah victims remembered by individuals attending the event are listed. Susanne has written many poems and dramatic presentations about the Holocaust, some of which she has recited at Yom Hashoah events. They also speak to school groups about the Holocaust under the auspices of Sonoma State University's Alliance for the Study of the Holocaust.

"They've been a driving force on the Yom Hashoah Committee," says Blair Pleasant, who has served with Al and Susanne on the committee for the last 10 years. "They do it all: They come up with ideas for programs. And they make sure the work that needs to get done gets done. If they say they are going to do something, you can be sure that they will do it. It's hard to find people like that."

Al and Susanne say they hope their efforts to keep alive the memory of the Holocaust will prevent future incidents of violence. "When I see the kids in our

Nursery School at Beth Ami, I always think back to how the Nazis were killing little children," Susanne says. "And I'm so happy that Jewish children can play and live here without worry in a loving and protective environment. Those horrible memories of what went on in Germany are an incentive for me to make sure that such things cannot happen here."

Working in a Spirit of Collaboration

Back in Germany, Al and Susanne recall, the synagogue was the center of one's religious life. Other nondenominational Jewish clubs and organizations sponsored social and cultural events. "We were not used to people turning to the synagogue to satisfy their social needs," Al says.

Because this was the model of Jewish life with which they were familiar, it always bothered Al and Susanne—and Al, in particular—to see the various synagogues in Sonoma County duplicating efforts to sponsor cultural programs and social events, especially given their limited resources both in terms of volunteers and money.

While serving as president of Beth Ami in the early 1990s, Al participated in a Presidents' Roundtable comprised of the presidents of the four congregations that existed in the county at the time and organized by Carolyn Metz, who was then the Jewish Community Federation's Sonoma County representative. "Al and I realized we were very much on the same page in terms of supporting active synagogue life while at the same time building community organizations and programs that were open to any Jewish person and to anyone interested in finding out more about Judaism," Carolyn recalls.

Through the roundtable discussions, Al began to promote ways in which the synagogues could work together to support community-wide programming. The roundtable initiated the first retreat for the boards of all Sonoma County synagogues under the slogan, "Let us join forces to work together on what we can better do together than separately." That initial effort led years later to the creation of the Jewish Community Agency. "Thinking back, I'm very proud to have planted that seed," Al says. "I never felt that competition between the synagogues was healthy or constructive. I always felt that we should find ways to cooperate with each other and to pool our resources for the good of the community." Al served on the board of the JCA, and was its president for a year as well as head of its Film Series.

Carolyn, who also worked closely with Al later

when she became JCA's executive director, says Al and Susanne deserve much of credit for the community-wide Jewish programming in the county today. "They brought a vision of the way the Jewish community could be organized here," she says. "That, coupled with their steadfast presence and participation in the community and their ability to make things happen, has helped the community grow and develop."



Bringing Music to the Community

In 2004, the Batzdorffs celebrated their 60th anniversary by sponsoring a free public concert at the Friedman Center. "It was our gift to the community that had given so much to us," Al says, adding that the idea for the concert was inspired by the memory of a house concert that his parents had given when he was 12 or 13. "That was the last big happy event I remember in Germany," he says. "It made such a great impression on me that I wanted to do something like that here."

During intermission at that first concert, the Batzdorffs made an appeal for funds that would be put toward their goal of building a new home for the library. They raised thousands of dollars, and they are still hoping that their dream of a new library will one day be realized.

The concert was such a success that another concert was planned the following year. The Batzdorffs again did all the leg work, but they got other people to help them cover the costs. By the third year, a committee was formed to organize what had been dubbed Absolute Music and had morphed into a series of concerts. Absolute Music is now in its fifth year, and although they have help, Al and Susanne still are responsible for much of the work.

Rabbi Schlesinger says the Batzdorffs' creation of the Absolute Music concert series is yet another example of their desire to find ways to help others. "The whole idea was to make inexpensive, high quality music available for people who can't necessarily afford the prices of the symphony or can't travel far to hear music," he says. "As always, the Batzdorffs were thinking, 'What can we give to others?'"

Still Going Strong

Today, Al and Susanne are 86 and still going strong. They are both still on Beth Ami's board, and Al is helping Beth Ami's new executive director Melissa Bloom transition into her new job. While officially retired as librarian of the Celia Gurevitch Library, Susanne remains devoted to the library and is actively involved in helping to determine the library's future. She often leads services when Rabbi Schlesinger is out of town.

Susanne and Al are still active in Beth Ami's book group and they continue to participate on the Yom Hashoah Committee. They are planning the next Absolute Music concert, and Al is already taking about what needs to happen in 2008 to mark the 70th anniversary of Kristallnacht.

"We still need something to do, and we enjoy contributing," Al says. "We are grateful that we still have the stamina to keep going, but we don't feel that projects should depend on us if the community considers them to be worthwhile."

"When you reach our age, you realize that life is very fragile," Susanne says. "We plan as if we are going to live forever, but at the same time we know that our luck could change at any moment. So we try to make the most of each day and enjoy ourselves and give thanks for the life we have. We don't take anything for granted."





*The 4th Benny Friedman
Community Recognition Award Dinner
Honorary Committee*

Marjorie & David Ballo	Carolyn Metz & Pam Adinoff
Rose & Jon Batzdorff	Florence Metz
Patty & Marc Bernstein	John Metz
Sylvia & Seymour Boorstein	Susan Milstein & Elliot Morrison
JoAnne & Sanford Bressick	Louise Packard & Larry Moskowitz
Ellen & Herb Brosbe	Ellen & Mike Mundell
Deborah Burg-Schnirman & Rick Burg	Pam & Joel Neuberg
Cynthia & Geshner Calmenson	Edith Newman
Eleanor & Leonard Cohen	Lauren & Michael Newman
Henry S. Cohn	Susy & Bob Raful
Audrey Darby	Elsie Rich
Helen Dresser	Muriel Robbins
Roslyn Edelson & Stanley Feingold	Ruth Robinson
Nancy & Andy Fleming	Shirley & Robert Rosaler
Suzie & Bill Friedman	Carol & Mark Rosen
Lynn & Claude Ganz	Ruth & Ira Rosenberg
Flora Lee Ganzler	Barbara & Larry Scharf
Marcia & Jerry Gladstone	Leanne Schy
Beth & Garry Goodman	Paula & Rabbi George Schlesinger
Karen Gould	Ethel & Stuart Schy
Fredrika & Brian Gross	Phyllis & Everett Shapiro
Judy Hulen-Gunnar	Barbara Schecter & Rabbi Jonathan Slater
Evelyn & Leo Gurevitch	Judi Rosenthal & Phil Steinschriber
Terry & Russ Gurevitch	Whitey Sterman
Florence & Dan Hoffenberg	Janice & Jeffrey Sternfeld
Lillian Judd	Sylvia G. Sucher
Jennifer Iscol & Joshua Katz	Arline Thomas
Arlene Rosenbaum & Rick Krigstein	Barbara Tomin
Susan L. Miller & Jerry Lakins	Ellen Watson & Ronald Welch
Barbara Levinson	Michelle & Paul Zygielbaum
Helen & Art Margolese	Anonymous
Kyle Marsh	



